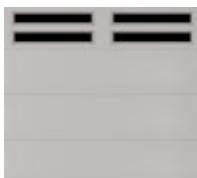


Garage Door

SELECTION GUIDE



The Genuine. The Original.



Table of Content:

Choosing a Door	3
Signature® Carriage Wood	4-5
Traditional Wood Collection	8-9
Modern Aluminum Collection	12-13
Envy™ Collection	14-15
Impression Fiberglass Collection®	16-17
Impression Steel Collection	18-19
Carriage House Collection	20-21
Courtyard Collection®	22-23
WindStorm™ Model 7565	24-25
Thermacore® Collection	26-29
WindStorm™ Models 5745 & 5765	30-31
Durafirm Collection™	32-33
Traditional Steel Collection	34-35
WindStorm™ Wind Load-Rated System	36
Decorative Hardware	37
Windows for Signature® Carriage Wood	38
Windows for Thermacore® Collection	39
Windows for WindStorm™ Model 5745 & 5765 ...	40
Windows for Traditional Steel Collection	41
Openers	42
National Distributor Network	44

Call 1-800-929-3667 (DOOR) to contact an Overhead Door™ Distributor near you.

overheaddoor.com

Choosing a Door

What to Consider When Selecting a Door



Thermacore® Collection, Model 5740, Flush panel,
Cedar Plank finish, Vertical Clear Long windows

Style

Whether your home is classic or contemporary, we offer styles to best complement your home's architecture. For a distinctive, custom look, choose insulated doors from our elegant Courtyard Collection®, Thermacore® Collection, Impression Fiberglass Collection® or the custom fine wood doors of the Signature® Carriage Collection.

Safety

If you live in an area that is prone to high winds, ordered with the appropriate wind load options, our WindStorm™ doors provide reliable protection against high wind damage and offer fine craftsmanship, durability and style.

Comfort

If you live in a climate with extreme hot or cold temperatures, we recommend a well-insulated, thermally-efficient door to ensure your comfort. Some of our insulated doors, including the Courtyard Collection® and Thermacore® Collection, also feature a steel backing that lends a finished, clean look to your garage's interior.



Overhead Door™ Brand participates in the DASMA Thermal Performance Verification Program. The program verifies the thermal performance of sectional garage doors. The lower the U-factor rating, the better the thermal performance.



Symbol indicates verified U-factor rating in accordance with the DASMA Thermal Performance Verification Program.



Signature® Carriage Wood, Model 9940, Custom wood



Traditional Steel, Model 1500, Brown finish



Impression Fiberglass Collection®, Model 7800,
Vertical Slat, Clay finish



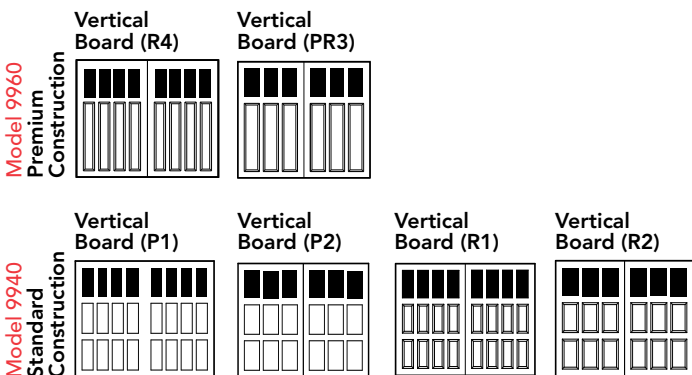
Signature® Carriage Wood

Custom Crafted Wood Doors – Models 9940, 9960

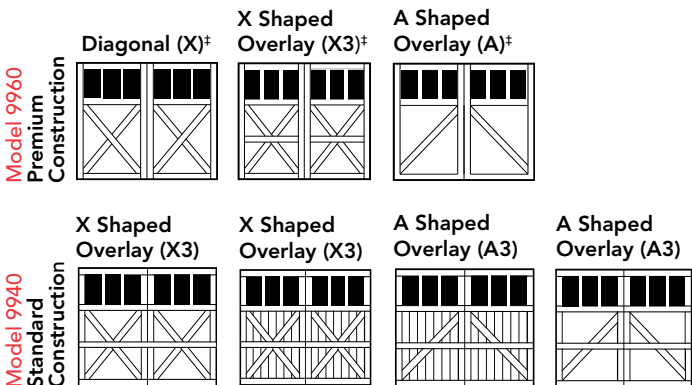
Panel Styles

Doors provided in unfinished, stain-grade or paint-grade wood. Models are available with or without windows and with square or arched tops.

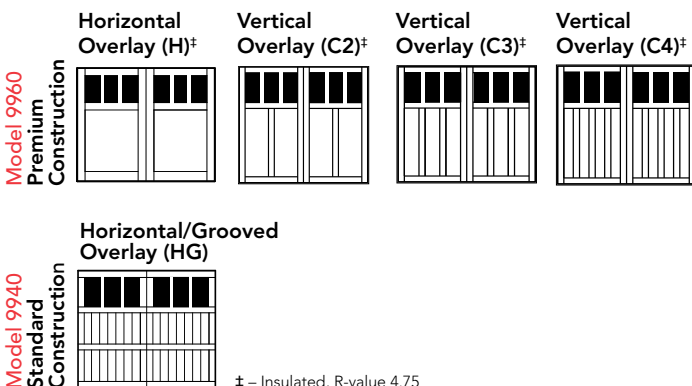
Parson Collection



Ponderosa Collection



Villa Madre Collection



† – Insulated, R-value 4.75



Multiple designs and wood species options let you choose the perfect complement to your home with our style, window and glass options. World class construction of rail and stile frame adds strength.

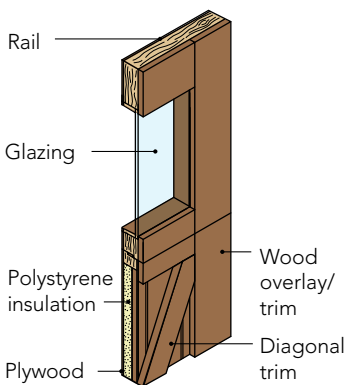


Polystyrene insulation can help diminish street noise and provide quieter door operation. R-value* of 4.75 available for select models.

* Overhead Door Corporation uses a calculated door section R-value for our insulated doors.

Premium Construction

Model 9960

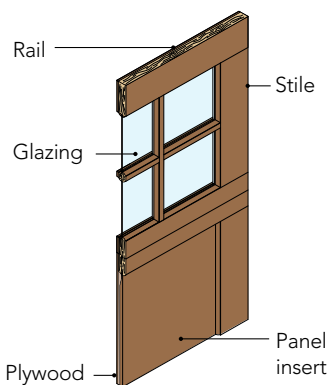


Paint or stain grade, insulation standard.

Four-layer construction. Polystyrene insulation provides an R-value of 4.75.

Standard Construction

Model 9940



Paint or stain grade, insulation optional.

1 5/8" thick rail and stile construction with panel inserts.

Window Styles

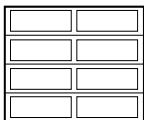
For full selection of windows please see page 34.

Traditional Wood Collection

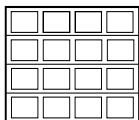
Rail and Stile Wood Doors – Models 3240, 3260

Panel Styles

Recessed Panel Designs Model 3240 Light Framed (FP1) or Heavy Framed (FP2)

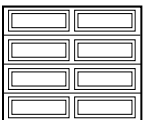


4-2

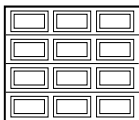


4-4

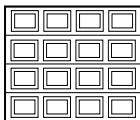
Raised Panel Designs Model 3260 Finger-Jointed (RP1) or Solid (RP34)



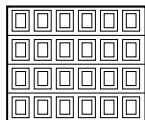
4-2



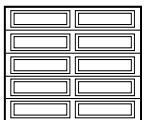
4-3



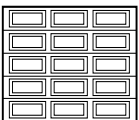
4-4



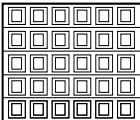
4-6



5-2



5-3



5-6

1 car design shown. Both panels are also available for 2 car designs. Decorative carved Raised panel designs available. Consult your Overhead Door™ Distributor for details.

Window Styles

Recessed Panel Windows Model 3240



Plain Short Panel



Sunray*



2 Panel – 4 over 4



Plain Long Panel



4 Panel – 2 over 2



2 Panel – 5 over 5



Cathedral



2 Panel – 3 over 3

*Molded designs with plastic inserts may not fit all panel sizes. Consult your distributor for availability.

Raised Panel Windows Model 3260 (454)



Plain Short Panel



Real Sunray



2 Panel – 4 over 4



Plain Long Panel



4 Panel – 2 over 2



2 Panel – 5 over 5



Cathedral*



2 Panel – 3 over 3

**Optional molded designs with plastic inserts may not fit all panel sizes. Consult your distributor for availability.

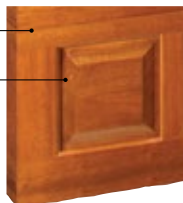
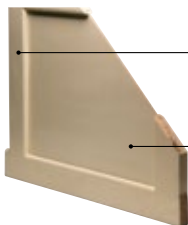
Glass Types

Clear glass comes standard with this product. Additional glass options are available, including 1/8" tempered and 1/8" double strength (DSB). Contact your local Overhead Door™ Distributor for more details.



Recessed Panel Model 3240

Raised Panel Model 3260



- 1** Recessed panels are constructed of $1\frac{3}{8}$ " high quality West Coast Hemlock.
- 3** Center of recessed panel is constructed of durable, $\frac{1}{4}$ " exterior-grade hardboard.

- 1** Door sections are constructed of $1\frac{3}{8}$ " thick finger-jointed wood rails and stiles; with solid stain-grade rails and stiles as an option.
- 2** Raised panels are constructed of $\frac{3}{4}$ " solid wood; edge-glued panels.

Mortise and tenon joints are glued and steel-pinned for increased strength and durability.

Shiplap section design provides weather-tight fit and smooth operation.

Rust resistant track and hardware are constructed of hot-dipped galvanized steel.

MODEL 3240 Recessed Panel	MODEL 3240 Recessed Panel	MODEL 3260 Raised Panel (Paint Grade)	MODEL 3260 Raised Panel (Stain Grade)
Features hardboard flat panels, thin rails and stiles	Features hardboard flat panels, thick rails and stiles	Features Hemlock panels, stiles and rails (finger-jointed)	Features Hemlock panels, stiles and rails (solid, one piece)
Smooth plywood panel option available	Smooth plywood panel option available	Hardboard raised panel option available	Meranti Mahogany and Cedar panel options available

3240 Model panels pictured above are custom painted.

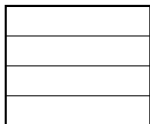
Traditional Wood Collection

Flush Panel Wood Doors – Model 3200

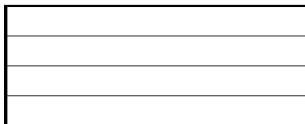
Panel Styles

Wood Flush (F6)

1 car

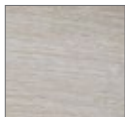


2 car



Solid arched top is optional.

Natural Wood



Primed Wood



All model panels have a total thickness of 13/8". Doors over 10' wide will have a vertical center seam.

Window Styles



Cathedral*



Real Sunray



False Sunray*



2 Panel – 2 over 2



4 Panel – 2 over 2



2 Panel – 3 over 3



2 Panel – 4 over 4



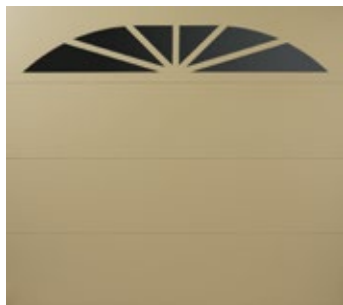
2 Panel – 5 over 5

Windows shown for 1 car panel designs. Not all window will fit all door sizes. Factory will advise if there is a problem with fitting.

* Molded designs with plastic inserts may not fit all panel sizes.
Consult your distributor for availability.

Glass Types

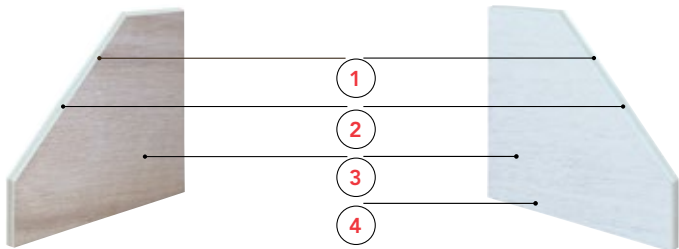
Clear glass comes standard with this product. Additional glass options are available, including 1/8" tempered and 1/8" double strength (DSB). Contact your local Overhead Door™ Distributor for more details.





Natural Wood

Primed Wood



- 1** Section thickness is 13/8".
- 2** Polystyrene insulated core provides a 4.75 R-value*.
- 3** External panels are pressure-bonded to framework with high-strength, waterproof adhesive.
- 4** Primed painted finish available option.

Rust resistant track and hardware are constructed of hot-dipped galvanized steel.

* Overhead Door Corporation uses a calculated door section R-value for our insulated doors.

MODEL 3200

Exterior Wood/Finish	Smooth plywood; priming option available; stained grade
Interior	Smooth plywood
Insulation	4.75 R-value, polystyrene

Modern Aluminum Collection

Models 9910, 9920

Frame Options

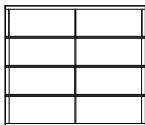
Standard Frame Model 9910

Features a narrow width and offers an array of frame finishes and special custom options in door sizes up to 16'0" wide.

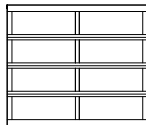
Heavy-Duty Frame Model 9920

Features a wider, heavy-duty frame in door sizes up to 26' wide. Model 9920 can also be fitted to meet wind load building requirements.

Model 9910



Model 9920



Glass Types

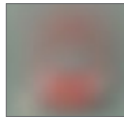
Double Strength (DSB) Glass comes standard. In addition we offer an array of choices to complement your home. Insulated glass available.



Double Strength (DSB)*



Obscure*



Satin Etched*



Impact Frosted Polycarbonate

Specialty Glass

- Laminated White
- Low E Glass*
- Tempered Glass
- Tinted Glass*

* Insulated options available

Glass Alternatives

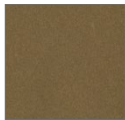
- Clear Lexan® Polycarbonate
- Multi Wall Polycarbonate
- Plexiglas® Acrylic
- Impact Clear and Frosted Polycarbonate - 0.250" min.

Colors

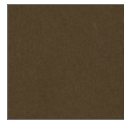
Anodized Finishes



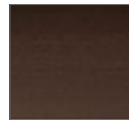
Clear (standard)



Light Bronze



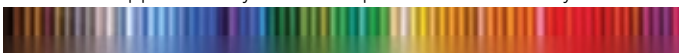
Medium Bronze



Dark Bronze

Powder Coat Finishes

Select from approximately 200 color options to best match your home.





Between Section Seals

Offer additional weather-resistance.

Commercial-Grade Aluminum Frame

Low-maintenance and corrosion resistant.

Design Flexibility

Available in a variety of vertical rail and horizontal stile widths to complement the style of your home.

Stylish Hardware

Hinges and fixtures are galvanized to maintain a contemporary look.

Solid Aluminum Panels

Also available.

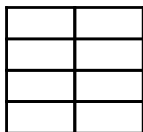


Envy™ Collection

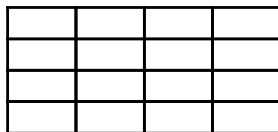
Model 9980

Frame Options

8'x 8'



8'x 16'



Panels are available in different heights and widths.
Contact your Overhead Door™ Distributor for details.

Glass Types



Opaque White



Opaque Black



Mirrored Gray



Mirrored Bronze



Translucent Black

Structure Finish

Powder Coat Finishes



White



Black



Bronze

Anodized Finishes



Black



Bronze

Actual colors may vary from brochure due to fluctuations in the printing process. Always request a color sample from your Overhead Door™ Distributor for accurate color matching before ordering your door.



¼" tempered glass panels are mounted on top of an aluminum structure for an ultra-modern, frameless look.



Powder coated hinges, struts and top bracket come standard, providing a finished, high-end appearance.

Weather barrier created by vinyl seals between tongue-and-groove sections.

Patent pending rails with glass ledge providing precision glass alignment and additional security.

Meets ASHRAE 90.1 and IECC® air infiltration requirements with a third-party tested value of less than 0.4 cfm/ft².

Meets California Code of Regulation, Title 24 air infiltration requirements with a third-party tested value of less than 0.3 cfm/ft².

Aluminum and Glass Pairings:

ALUMINUM OPTIONS	GLASS COLOR
White Powder Coat	Opaque White
Black Powder Coat / Bronze Powder Coat / Black Anodized / Bronze Anodized	Opaque Black /Mirrored Gray / Mirrored Bronze / Translucent Black

Each door is unique and built to order, therefore a slight deviation in glass alignment is possible. These doors may become hot to the touch in sustained hot weather.

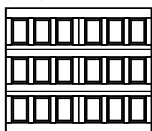
Impression Fiberglass Collection®

Model 7800

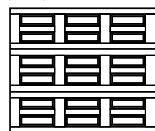
Panel Styles

Three-section styling on 7' high doors gives a custom design look. Our 8' high doors have four-section styling. All panels have white finished interiors with matching, low-profile hinges. 7' high doors shown below. Doors over 9' wide have a vertical seam added for support.

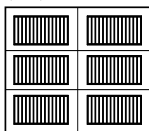
Vertical Raised (VR)



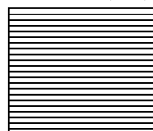
Horizontal Raised (HR)



Vertical Long (VL)



Horizontal V-Groove (HV)



Colors

Stain colors shown below on oak wood grain pattern. Actual door colors may vary from brochure photos due to fluctuations in the printing process. Always request a color sample from your Overhead Door™ Distributor for accurate color matching before ordering your door.



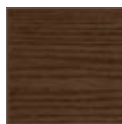
White



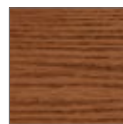
Cherry



Mahogany



Walnut



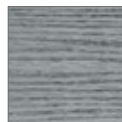
Oak



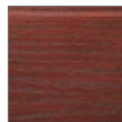
Clay



Green



Gray



Honduran
Mahogany



Red Oak

Window Styles

For Horizontal Raised and Horizontal V-Groove Panels



For Vertical Raised Panel



For Horizontal V-Groove Panel



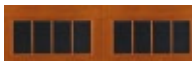
For Vertical Long Panel



Plain Window



6 Window



8 Window



12 Window



16 Window




20 Window

Glass Types

Clear, Insulated, Tempered, Obscure, Satin Etched and Tinted.



Foamed-in-Place Polyurethane Insulation

A U-factor¹  of 0.15 and an R-value² of 11 helps control costly heat loss and gain. This type of insulation can help diminish street noise and provides for quieter door operation.



Limited
Lifetime Warranty
on steel backing



Limited
3-Year Warranty
on fiberglass
exterior

Bulb-Type Bottom Weatherseal

Guards against wind and rain while providing a cushion when closing.

1 - U-factor is independently tested and verified per ANSI/DASMA 105 using solid doors and specific product sizes.

2 - Overhead Door Corporation uses a calculated door section R-value for our insulated doors.



Fiberglass Exterior

The beauty of wood without the maintenance.

Factory Installed Powder-Coated Hardware

It ensures proper alignment and smoother operation with a clean interior appearance.

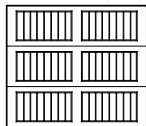


Impression Steel Collection®

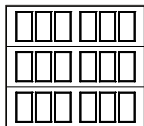
Model 5800

Panel Styles

Recessed (RP)



Vertical Recessed (VRP)



Colors

Actual door colors may vary from brochure photos due to fluctuations in the printing process. Always request a color sample from your Overhead Door™ Distributor for accurate color matching before ordering your door.

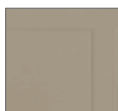
Standard Finishes



White



Almond



Sandstone



Brown

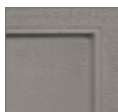
Premium Finishes



Desert Tan



Gray



Terra Bronze



Black

Window Styles



Plain Window Long



Stockbridge (3-Pane)



Stockbridge (4-Pane)



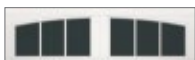
Stockton (6-Pane)



Stockton (8-Pane)



Plain Window



Wyndbridge (3-Pane)



Wyndbridge (4-Pane)



Somerton (6-Pane)



Somerton (8-Pane)

Window size and shape may vary slightly based on door size. Option of single or double arch for double car doors. All window styles are made using a single piece of glass with dividers.

Glass Types

Available in insulated and non-insulated glass.



Clear




Obscure



Satin Etched



Three sections for 7' doors provide large steel embossments for a dramatic appearance.

Foamed-in-place, polyurethane insulation sandwiched between two layers of corrosion-resistant steel with a U-factor¹  of 0.15 and an R-value² of 12.

Oversized windows provide maximum natural light into the garage – one of the largest garage door windows on the market!

Wind load-rated to withstand a variety of wind conditions and meet local building codes.

1 - U-factor is independently tested and verified per ANSI/DASMA 105 using solid doors and specific product sizes.

2 - Overhead Door Corporation uses a calculated door section R-value for our insulated doors.



Limited
Lifetime Warranty
on door sections



Carriage House Collection

Model 7540

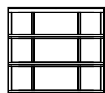
Panel Styles

Three-section styling on 7' high doors (shown below) gives a custom design look. Our 8' high doors have four-section styling. Models are available with or without windows and with square or arched tops. 7' high doors with square tops are shown.

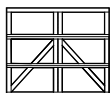
Horizontal Overlay (H)



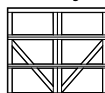
Mixed Panel (MP)



A Shaped Overlay (A)



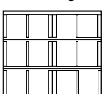
V Shaped Overlay (V)



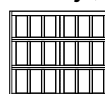
Flush Recessed Panel (FRP)



Horizontal & Vertical Overlay (E2)



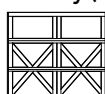
Horizontal & Vertical Overlay (E3)



Horizontal & Vertical Overlay (E4)



X Shaped Overlay (X)



Colors

Actual door colors may vary from brochure photos due to fluctuations in the printing process. Always request a color sample from your Overhead Door™ Distributor for accurate color matching before ordering your door.

Painted Finishes



White (Standard)



Gray



Clay



Green

Two-Toned Painted Finishes



Gray/White



Clay/White



Green/White

Trim boards are white (standard).

Stained Finishes



Mahogany



Walnut



Natural Oak



Green



Gray



Clay



Honduran Mahogany

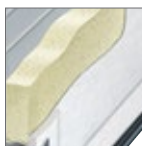


Red Oak



Durable Finish

Hot-dipped galvanized steel with two coats of baked-on polyester paint.



Polyurethane insulation provides thermal efficiency with a U-factor¹ of 0.16 and an R-value² of 10. ✓



Bulb seal protects against the elements.



Embossed wood grain texture adds beauty, sophistication and durability.

1 - U-factor is independently tested and verified per ANSI/DASMA 105 using solid doors and specific product sizes.

2 - Overhead Door Corporation uses a calculated door section R-value for our insulated doors.

Window Styles



- 1** Plain Window Square
2 Plain Window Square



- 1** 12 Window Square
2 24 Window Square



- 1** Plain Window Arched
2 Plain Window Arched



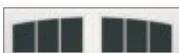
- 1** 12 Window Arched
2 24 Window Arched



- 6** Window Square
12 Window Square



- 16** Window Square
32 Window Square



- 6** Window Arched
12 Window Arched



- 16** Window Arched
32 Window Arched



- 8** Window Square
16 Window Square



- 8** Window Arched
16 Window Arched

1 – Windows for single car doors. **2** – Windows for double car doors.

Option of single or double arch for double car doors.

Models are also available in solid arched top panels (no windows).

Glass Types

Clear, Insulated, Tempered, Obscure, Satin Etched and Tinted.

Courtyard Collection®

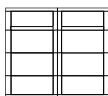
Models 7560, 7520

Panel Styles

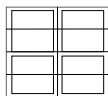
Panels shown below in square top. Also available in Arched top.

Models 7560/7520

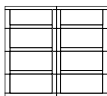
Horizontal Overlay (H1)



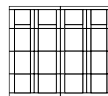
Horizontal Overlay (H2)



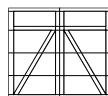
Horizontal Overlay (H)



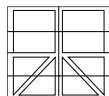
Vertical Overlay (C5)



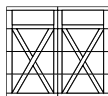
A Shaped Overlay (A)



A Shaped Overlay (A2)

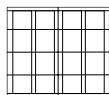


X Shaped Overlay (X)

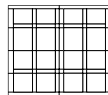


Models 7560

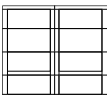
Vertical Overlay (C2)



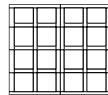
Vertical Overlay (C4)



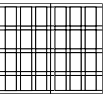
Horizontal Overlay (H3)



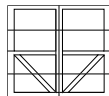
Horizontal & Vertical Overlay (E2)



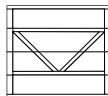
Horizontal & Vertical Overlay (E3)



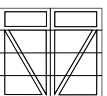
V Shaped Overlay (V2)



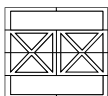
V Shaped Overlay (V1)†



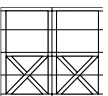
V Shaped Overlay (V)



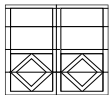
Diagonal Design (X1)†



Diagonal Design (X2)



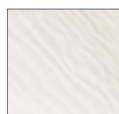
Vertical Board Design (D)



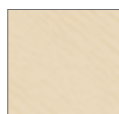
† Windows and arches not available.

Colors

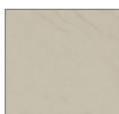
Actual door colors may vary from brochure photos due to fluctuations in the printing process. Always request a color sample from your Overhead Door™ Distributor for accurate color matching before ordering your door.



White



Almond



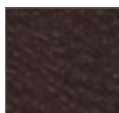
Desert Tan



Sandstone



Terra Bronze*



Brown*



Forest Green*




Gray*



Black*

* Model 7560 only



Foamed-in-place polyurethane insulation provides a U-factor¹  up to 0.15 and an R-value² of up to 12.76.



Model 7560



Model 7520



In-Between-Section Thermal Seals

With an air infiltration rating as low as .08 cfm, these seals help to provide superior resistance to the elements.



Weather Resistant
Wood grain textured trim boards are resistant to dents and the elements.

Window Styles

Insulated glass available.



Clear Long



Stockbridge



Stockton



Stockton Arch




Somerton



Wyndbridge Arch

1 - U-factor is independently tested and verified per ANSI/DASMA 105 using solid doors and specific product sizes.

2 - Overhead Door Corporation uses a calculated door section R-value for our insulated doors.

FEATURES	MODEL 7520	MODEL 7560
Wood Grain Trim	•	•
Color Matched Trim		•
Warranty	20-Year Limited	Limited Lifetime
Polyurethane Insulation	•	•
U-factor ¹ 	0.20	0.15
R-value ²	9.3	12.76
Overlay Thickness	3/8"	3/4"
Door Thickness	1"	1 3/8"
Commercial Track	Optional	•
Residential Track	•	
Ball Bearing Rollers with Nylon Wheels	•	•

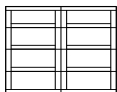
WindStorm™ Model 7565

WindStorm™ Model 7565

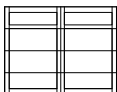
Panel Styles

Panels below shown in square top. Also available in arched top.

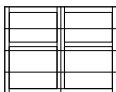
Horizontal Overlay (H)



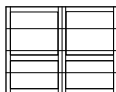
Horizontal Overlay (H1)



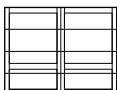
Horizontal Overlay (H2)



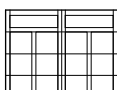
Horizontal Overlay (H3)



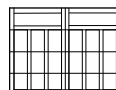
Horizontal Overlay (H4)



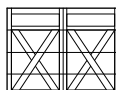
Vertical Overlay (C4)



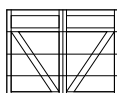
Vertical Overlay (C5)



X Shaped Overlay (X)



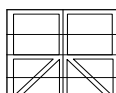
V Shaped Overlay (V)



A Shaped Overlay (A)



A Shaped Overlay (A2)



Colors

Actual door colors may vary from brochure photos due to fluctuations in the printing process. Always request a color sample from your Overhead Door™ Distributor for accurate color matching before ordering your door.

Color Options



White/White



Almond/White



Taupe/White



Brown/White



Black/White

Overlay Texture Options



Wood Grain
(Standard)



Smooth

Window Styles

Contact your Overhead Door™ Distributor to determine window availability and your local building official for code requirements.

Non-Impact Windows



Clear Long



Stockbridge



Stockton



Stockton Arch



Somerton



Wyndbridge

Impact Windows



Clear Long Impact



Stockbridge Impact



Stockton Impact



Stockton Arch Impact



Somerton Impact



Wyndbridge Impact




Stringently tested to meet wind load requirements.

Available with impact rated options.

Reinforced hardware throughout the door.

Designed to meet local building codes – when ordered with the appropriate wind load options – including Miami-Dade County.


Foamed-in-place polyurethane insulation – with a U-factor¹  of 0.15 and an R-value² of 12.12 can improve the thermal efficiency of your garage space, reduce street noise and make the door operate more quietly.

Durable overlays are specially treated to resist termites, weather and fungal decay.

Joint seals – snug-fitting tongue-and-groove section joints reduces wind and weather from entering the garage.

For specific wind load information please see page 36.

- 1 - U-factor is independently tested and verified per ANSI/DASMA 105 using solid doors and specific product sizes.
- 2 - Overhead Door Corporation uses a calculated door section R-value for our insulated doors.

FEATURES	7565 SERIES
Wood Grain Trim	•
Polyurethane Insulation	•
U-factor ¹ 	0.15
R-value ²	12.12
Overlay Thickness	3/8"
Door Thickness	1 3/8"
Commercial Track	Optional
Residential Track	•
Ball Bearing Rollers with Nylon Wheels	•
Warranty	Limited Lifetime

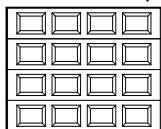
Thermacore® Collection

Models 5720, 5740, 5760

Panel Styles

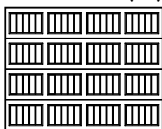
Our Thermacore® doors feature wood grain embossment to enhance the appearance of your door. Doors are available in 7' or 8' height.

Standard Panel (SP)



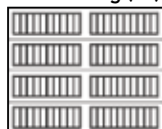
Models 5720, 5740, 5760 (297, 194, 494)

Vertical Short (VS)



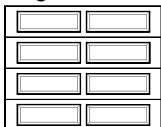
Models 5720, 5740, 5760 (296, 199, 497)

Vertical Long (VL)



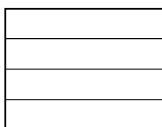
Model 5740 (192)

Long Panel (LP)



Models 5720, 5740, 5760

Flush Panel (FP)



Models 5720, 5740, 5760

Microgroove (MG)



Model 5740

Colors

Painted Finishes

(Wood Grain Embossment)



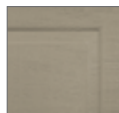
White



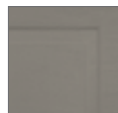
Almond



Desert Tan



Sandstone



Terra Bronze



Brown



Forest Green



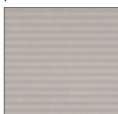
Gray



Black

Modern Metallic Finishes

(Shown on Microgroove Panel)



Silver



Dark Bronze



Black Frost

Actual door colors may vary from brochure photos due to fluctuations in the printing process. Always request a color sample from your Overhead Door™ Distributor for accurate color matching before ordering your door.

Artisan Wood Grain™ Plank Finishes

Stucco Embossment



Beachwood Plank



Cedar Plank



Medium Oak Plank



Carbon Oak Plank



Black Plank

Artisan Wood Grain™ Bi-directional Finishes*

Stucco Embossment



Western Cedar



Carbon Oak



Medium Oak

* These colors have a limited window availability. See Distributor for details.

Thermacore® Collection

Color Options by Panel Style

	COLORS	STANDARD			VERTICAL SHORT			VERTICAL LONG	LONG			FLUSH			MICRO-GROOVE
		5720	5740	5760	5720	5740	5760	5740	5720	5740	5760	5720	5740	5760	5740
Painted Finishes	White	•	•	•	•	•	•	•	•	•	•	•	•	•	
	Almond	•	•	•	•	•	•	•	•	•	•	•	•	•	
	Desert Tan	•	•	•	•	•	•	•	•	•	•	•	•	•	
	Sandstone	•	•	•	•	•	•	•	•	•	•	•	•	•	
	Terra Bronze		•			•		•		•			•		
	Brown		•	•		•	•	•		•	•		•	•	
	Forest Green		•			•		•		•			•		
	Gray		•			•		•		•			•		
	Black		•	•		•	•	•		•	•		•	•	
Modern Metallic Finishes	Silver												•		•
	Dark Bronze												•		•
	Black Frost												•		•
Artisan Wood Grain™ Plank Finishes	Beachwood Plank												•		
	Cedar Plank												•		
	Medium Oak Plank												•		
	Carbon Oak Plank												•		
	Black Plank												•		
Artisan Wood Grain™ Bi-Directional Finishes	Western Cedar		•	•		•	•	•		•	•				
	Carbon Oak		•	•		•	•	•		•	•				
	Medium Oak		•	•		•	•	•		•	•				



Thermacore® Collection

Models 5720, 5740, 5760

Window Styles

For the full selection of windows for Thermacore® Collection doors please see page 39.

Construction

Thermacore® Collection steel garage doors feature premium insulation construction and design which provides maximum thermal efficiency and reduced air infiltration for your garage space. This durable line of garage doors gives you many years of reliable operation while providing comfort and beauty to your home, even in extreme climates.



Thermacore® Construction

Foamed-in-place, CFC-free polyurethane insulation sandwiched between two layers of corrosion-resistant steel helps control costly heat loss and gain.



Model 5740/ 5760



Model 5720



Thermal Seals

Innovative in-between section thermal seals provide an air infiltration rating as low as .08 cfm and help to provide superior resistance to the elements.



Bottom Weatherseal

This bulb-type weatherseal guards against wind and rain while providing a cushion when closing.



Durable Finish

Interior-side hot-dipped galvanized steel backing, with two coats of baked-on polyester paint, provides strength and a finished, clean appearance.



Multiple Surface Options



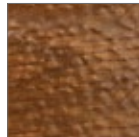
Embossed wood grain adds beauty, sophistication and durability.



Microgroove waved pattern creates a striking light effect.



Smooth, non-textured surface gives a modern look.




Pebble grain embossement creates an appealing pattern texture.

Wind Load Options

Models 5740 and 5760 are FBC approved and will provide added protection to your home during high wind events, including hurricane-force winds.



MODELS	DOOR THICKNESS	POLYURETHANE INSULATION	STEEL GAUGE	U-FACTOR ¹ 	R-VALUE ²	STEEL BACKING	WARRANTY
5720	1"	•	28 ga.	0.20	9.31	•	20-Year Limited
5740	1.4"	•	28 ga.	0.15	12.76	•	Limited Lifetime
5760	2"	•	28 ga.	0.10	17.5	•	Limited Lifetime

1 - U-factor is independently tested and verified per ANSI/DASMA 105 using solid doors and specific product sizes.

2 - Overhead Door Corporation uses a calculated door section R-value for our insulated doors.

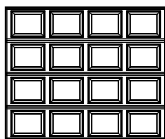
WindStorm™ Models 5745 & 5765

WindStorm™ Models 5745 & 5765

Panel Styles

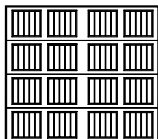
Our WindStorm™ doors feature wood grain embossment to enhance the appearance of your door. Doors are available in 7' or 8' height.

Standard Panel (SP)



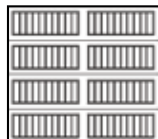
Model 5745

Vertical Short (VS)



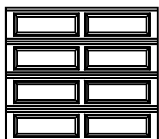
Models 5745, 5765

Vertical Long (VL)



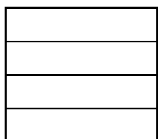
Model 5745

Long Panel (LP)



Models 5745, 5765

Flush Panel (FP)



Models 5745, 5765

Colors

Actual door colors may vary from brochure photos due to fluctuations in the printing process. Always request a color sample from your Overhead Door™ Distributor for accurate color matching before ordering your door.

Standard Painted Finishes



White



Almond



Taupe



Brown



Terra Bronze



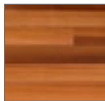
Black

Artisan Wood Grain™ Plank Finishes

Stucco Embossment (Model 5745 Flush Panel only)



Beachwood Plank



Cedar Plank



Medium Oak Plank



Carbon Oak Plank



Black Plank

Artisan Wood Grain™ Bi-directional Finishes*

Stucco Embossment (Not available on Flush panel)



Western Cedar



Carbon Oak



Medium Oak

* These colors have a limited window availability. See Distributor for details.

Window Styles

For the full selection of windows please see page 40.

Model 5745 (Impact glass available).

For Vertical Short Panels with windows a full row of windows are required.

For Standard, Vertical Short, Long Panels with windows a full row of impact windows are required.

Model 5765 (Impact glass not available).

For Vertical Short Panels with windows a full row of windows are required.



Stringently Tested to Meet Wind Load Requirements.



Impact Resistant.

Reinforced Hardware Throughout the Door.

Designed to Meet Local Building Codes

When ordered with the appropriate wind load options – including Miami-Dade County.

In-Between Section Thermal Seals

Snug-fitting tongue-and-groove section joints reduces wind and weather from entering the garage.


Heavy Gauge Steel End Caps

For better appearance, improved strength and to protect the insulation from damage.

Bulb-Type Bottom Weatherseal

Guards against wind and rain while providing a cushion when closing

For specific wind load information please see page 36.

MODELS	DOOR THICKNESS	POLYURETHANE INSULATION	U-FACTOR ¹ 	R-VALUE ²	STEEL BACKING ³	WARRANTY
5745	1 3/8"	•	0.15	12.12	•	Limited Lifetime
5765	1 7/8"	•	0.12	16.22	•	Limited Lifetime

1 - U-factor is independently tested and verified per ANSI/DASMA 105 using solid doors and specific product sizes.

2 - Overhead Door Corporation uses a calculated door section R-value for our insulated doors.

† Backing: Steel – Interior-side steel backing for strength and finished appearance.

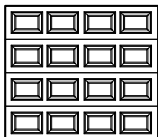
Durafirm Collection®

Model 3560

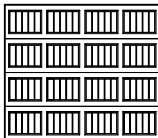
Panel Styles

Doors are available in 7' or 8' height. Shown in 7'.

Standard Panel (SP)

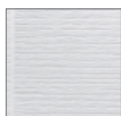


Vertical Short (VS)



Colors

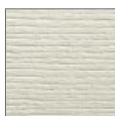
Actual door colors may vary from brochure photos due to fluctuations in the printing process. Always request a color sample from your Overhead Door™ Distributor for accurate color matching before ordering your door.



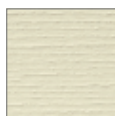
Glacier White



Cape Cod Gray



Monterey Sand



Adobe Cream

Window Styles

Insulated windows are available.



Clear



Cathedral



Ruston



Stockton



Williamsburg



4-piece Williamsburg



8-piece Williamsburg

Glass Types



Clear Double Strength (DSB)



Obscure

Satin Etched Privacy Glass is available with three styles of etching.



Eclipse




Diamond



Prairie



Bonded Steel, Polyurethane and Vinyl

Provide incredible strength, impressive sound absorption and energy efficiency with a U-factor¹  of 0.24 and an R-value² of up to 11.75.



Deep Raised Panels

Rich wood grain texture for the timeless look of freshly painted hardwood. Available in standard panel style only.

Through-and-Through Color PVC Construction

Color goes all the way through the exterior vinyl skin so scratches are minimized.

UV-Resistant Resin

Contains special polymers that protect your door from the sun's harmful ultraviolet rays.

Twin Structural Struts

22-gauge steel C-channels run the full length of each panel and are anchored to interior steel stiles for strength.

1 - U-factor is independently tested and verified per ANSI/DASMA 105 using solid doors and specific product sizes.

2 - Overhead Door Corporation uses a calculated door section R-value for our insulated doors.



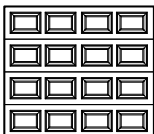
Traditional Steel Collection

Models 1400, 1440, 1500, 1540, 1600

Panel Styles

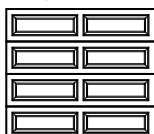
Our Traditional Steel Collection doors feature a wood grain embossment to enhance the appearance of your door. Choose from Standard, Long or Vertical Short panels.

Standard Panel (SP)



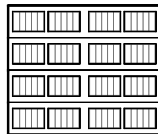
Models 1400, 1440, 1500, 1540

Long Panel (LP)



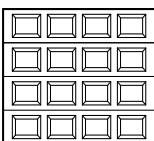
Models 1400, 1440, 1500, 1540

Vertical Short (VS)



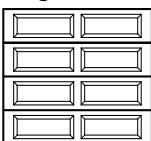
Models 1400, 1440, 1500, 1540

Standard Panel (SP)



Model 1600

Long Panel (LP)

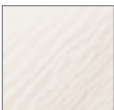


Model 1600

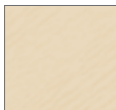
Colors

Actual door colors may vary from brochure photos due to fluctuations in the printing process. Always request a color sample from your Overhead Door™ Distributor for accurate color matching before ordering your door.

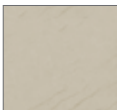
Standard Finishes



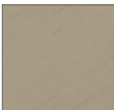
White



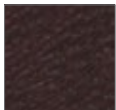
Almond



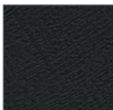
Desert Tan



Taupe/
Sandstone*



Brown



Black**

* Called Sandstone on Model 1600.

** Not available on Model 1600.

Window Styles

For the full selection of windows for Traditional Steel doors please see page 41.

Glass Types



Clear (Standard)



Obscure



Bronze

Optional glass include:

- Solar Bronze – Model 1600 (SP)
- High Velocity Glass – not available on Model 1600 (LP)
- Insulated Glass – Model 1600 (SP)



Embossed Wood Grain Texture
Adds beauty, sophistication and durability.

Reinforced Door Construction
For maximum strength, durability and minimal weight.



Durable Finish
Hot-dipped galvanized steel with two coats of baked-on polyester paint.



Bulb-Type Bottom Weatherseal
Guards against wind and rain while providing a cushion when closing.




Model 1440//1540/1600



Model 1440



Model 1500

MODELS	DOOR THICKNESS	POLYSTYRENE INSULATION	U-FACTOR ¹ 	R-VALUE ²	HEAVY-DUTY STEEL [§]	BACKING [†]	WARRANTY
1400	2"						15-Year Limited
1440	2"				•		Limited Lifetime
1500	2"	•		7.4		Vinyl	20-Year Limited
1540	2"	•		7.4	•	Vinyl	Limited Lifetime
1600	2"	•	0.23	9.8		Steel	Limited Lifetime

¹ - U-factor is independently tested and verified per ANSI/DASMA 105 using solid doors and specific product sizes.

² - Overhead Door Corporation uses a calculated door section R-value for our insulated doors.

[§] Heavy-duty steel: A thicker, more durable and dent-resistant option, designed to withstand additional knocks and bumps from outdoor activity.

[†] Backing: Vinyl – For a clean, more finished look and added sound absorption.
Steel – Interior-side steel backing for strength and finished appearance.

WindStorm™

Wind Load-Rated System for Garage Doors

Our WindStorm™ rated doors not only provide reliable protection against high wind damage, but also feature fine craftsmanship, trouble-free performance, lasting durability and eye-catching curb appeal.

APPROVAL AGENCIES/BUILDING CODES

Collection	Building Code (IBC) & International Residential Code (IRC)	Florida Building Code (FBC)	Florida Building Code (FBC) Impact Rated	Texas Department of Insurance (TDI)	Texas Department of Insurance (TDI) Impact Rated	Miami-Dade County
Traditional Steel Collection	•	•	•	•	•	•
Models 5745 / 5765	•	•	•	•	•	•
Model 7565	•	•	•	•	•	•
Thermacore® Collection	•	•	•			
Courtyard Collection®	•	•	•			
Modern Aluminum Collection	•	•	•			
Durafirm Collection®	•	•				
Signature® Carriage Collection	•	•				

Decorative Hardware

Accents for Style

Further individualize your garage door with our distinctive decorative exterior handles and hinges. Available as optional accessories on our door collections. Not all hardware will fit all door sizes. Consult your local distributor for more information.

Premium Collection



Arrow



Aspen



Conifer



Fleur De Lis



Barcelona



Door Accents



Iron Studs



Lion's Head Carriage Knocker

Value Collection



Bean Hinge
(16" only)



Large Bean Handle



Spear Hinge
(16" and 18" available)



Large Spear Handle

Hammered Knockers



Arrow



Aspen



Barcelona



Conifer



Fleur-de-Lis



Spear



Small Spear Handle

Windows

Signature Carriage® Wood

Available on Single Door



3PS- Three Pane Square Top



3PA- Three Pane Arched Top



4PS- Four Pane Square Top



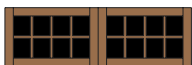
4PA- Four Pane Arched Top



6PS- Three over Three Square Top



6PA- Three over Three Arched Top



8PS- Four over Four Square Top



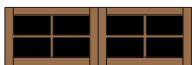
8PA- Four over Four Arched Top



2PS- Two Pane Square Top



2PA- Two Pane Arched Top



22S- Two over Two Square Top



22A- Two over Two Arched Top

Available on Double Door



3PS- Three Pane Square Top



3PA- Three Pane Arched Top



4PS- Four Pane Square Top



4PA- Four Pane Arched Top



6PS- Three over Three Square Top



6PA- Three over Three Arched Top



8PS- Four over Four Square Top



8PA- Four over Four Arched Top



2PS- Two Pane Square Top



2PA- Two Pane Arched Top



22S- Two over Two Square Top



22A- Two over Two Arched Top

Double door - double arched windows are available on some models. Not all window options available for all models. Consult your Overhead Door™ Distributor for additional options that may be available.

Windows

Thermacore® Collection

Available on **Standard, Flush** and **Vertical Short** Panels



Clear Short



Ashton 1



Cascade 1



Cathedral 1



Madison 1



Prairie 1



Ruston 1



Sherwood 1



Stockford 1



Stockton 1



Waterton 1



Williamsburg 4



Winston 1



Williamsburg 8 Double Car

Carriage Style Window Trim available on **Model 5740 Standard** and **Flush** Panels only



Stockbridge



Stockton



Stockton Arch



Somerton



Wyndbridge Arch

Available on **Long, Flush, Vertical Short** and **Vertical Long** Panels



Clear Long



Ashton 2



Cascade 2



Cathedral 2



Prairie 2



Ruston 2



Sherwood 2



Somerton 2*



Stockbridge 2 (3-Lite)



Stockbridge 2 (4-Lite)



Stockford 2



Stockton 2 (4-Lite)



Stockton Long (6-Lite)



Stockton 2 (8-Lite)



Stockton 2 (8-Lite Arched)



Stockton 2 (12-Lite)



Waterton 2



Williamsburg 2



Wyndbridge 2



Williamsburg 2 Double Car (4 pc)

Available on **Flush** and **Microgroove** Panels in **Modern Metallic** finishes and **Flush** Panels in **Artisan Wood Grain™** Plank Finishes only. Modern Metallic finishes cannot be paired with other window options.



Narrow



Double Narrow

Windows

WindStorm™ Models 5745 & 5765

Artisan Wood Grain™ Plank Finishes and Paint Finishes



Arched Stockton Long



Ashton Long



Cascade Long



Cascade Short



Cathedral Long



Cathedral Short



Clear Long



Clear Short



Double Narrow



Narrow



Prairie Long



Prairie Short



Ruston Long



Sherwood Long



Sherwood Short



Stockbridge Long (3-Lite)



Stockbridge Long (4-Lite)



Stockford Long



Stockton Long (4-Lite)



Stockton Long (6-Lite)



Stockton Long (8-Lite)



Stockton Long (8-Lite Arched)



Stockton Long (12-Lite)



Stockton Short



Waterton Long



Waterton Short



Williamsburg Long



Williamsburg Short



Wyndbridge Long



Arched Stockton Long 4 pc



Williamsburg Long 4 pc

Choice of single or double arch is available for arched top double car windows

Artisan Wood Grain™ Bi-Directional Finishes



Clear Long



Clear Short



Prairie Long



Prairie Short



Stockbridge Long (3-Lite)



Stockbridge Long (4-Lite)



Stockton Long (4-Lite)



Stockton Long (6-Lite)



Stockton Long (8-Lite)



Stockton Short

Model 5745 (Impact glazing available)

For Vertical Short panels with windows a full row of windows are required. For Standard, Vertical Short, Vertical Long panels with windows a full row of impact windows are required.

Model 5765 (Impact glazing not available)

For Vertical Short panels with windows a full row of windows are required.

Window Availability by Door Panel Style

STANDARD PANEL

Cascade Short

Cathedral Short

Clear Short

Prairie Short

Sherwood Short

Stockton Short

Waterton Short

Williamsburg Short (4 pc & 8 pc)

VERTICAL SHORT PANEL

*Arched Stockton Long

Ashton Long

Cascade Short & Long

Cathedral Short & Long

Clear Short & Long

Prairie Short & Long

Ruston Long

Sherwood Short & Long

Stockbridge Long (3-Lite)

Stockbridge Long (4-Lite)

Stockford Long

Stockton Long (4, 6, 8 & 12-Lite)

Stockton Long Arch 8-Lite

Stockton Short (4-Lite)

Waterton Short & Long

Williamsburg Long (2 pc & 4 pc)

Wyndbridge Long

(2 pc, 3 pc, 4 pc, 5 pc)

Windows

WindStorm™ Models 5745 & 5765

Window Availability by Door Panel Style (Continued)

LONG & VERTICAL LONG PANEL

*Arched Stockton Long
 Ashton Long
 Cascade Long
 Cathedral Long
 Clear Long
 Prairie Long
 Ruston Long
 Sherwood Long
 Stockbridge Long (3-Lite)
 Stockbridge Long (4-Lite)
 Stockford Long
 Stockton Long (4, 6, 8 & 12-Lite)
 Stockton Long Arch 8-Lite
 Waterton Long
 Williamsburg Long (2 pc & 4 pc)
 Wyndbridge Long
 (2 pc, 3 pc, 4 pc, 5 pc)

FLUSH PANEL

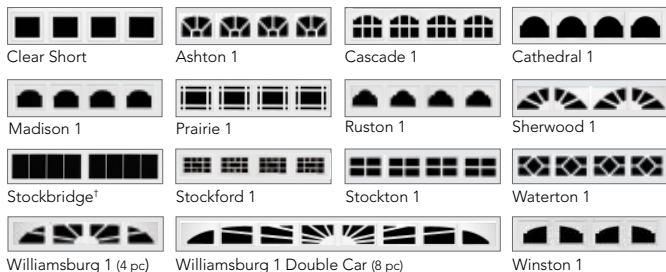
*Arched Stockton Long
 Ashton Long
 Cascade Short & Long
 Cathedral Short & Long
 Clear Short & Long
 **Double Narrow
 **Narrow
 Prairie Short & Long
 Ruston Long
 Sherwood Short & Long
 Stockbridge Long (3-Lite)
 Stockbridge Long (4-Lite)
 Stockford Long
 Stockton Long (4, 6, 8 & 12-Lite)
 Stockton Long Arch 8-Lite
 Stockton Short (4-Lite)
 Waterton Short & Long
 *Williamsburg Long (2 pc & 4 pc)
 *Williamsburg Short (4 pc & 8 pc)
 Wyndbridge Long (2 pc, 3 pc, 4 pc)

* Available in single and double arch.

** Artisan Wood Grain™ Plank Finishes with 1/2" clear insulated or impact resistant glass.

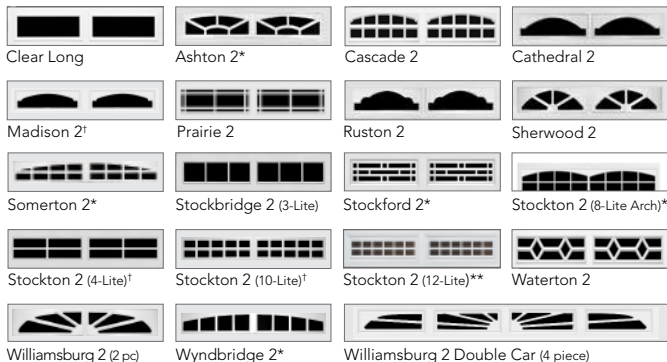
Traditional Steel Collection

Available on Standard Panel and Vertical Short Panels



Available on Long Panels

Long panel window option and trim not available on Model 1600.



* Limited availability depending on door size **Model 1600 (LP) only †Not available on Model 1600

Openers

Designed for Performance

SAFE-T-PULSE™
TECHNOLOGY



LED light fixture



Battery Backup capable
Available with integrated
OHD ANYWHERE

Infinity™ 2000 Models 9020H/9020H-B/ 9120H/9120H-B

The Ultimate in Power, Speed and Convenience

Direct Drive Wall Mount

- Integrated Wi-Fi with OHD Anywhere® (9120H-B/9120H)
- Integrated battery backup (9020H-B/9120H-B)
- 24V DC motor
- Opening speed up to 7.5 in/second
- LED light fixture included
- CodeDodger® Access Security System



Battery Backup capable
Available with integrated
OHD ANYWHERE

Destiny® 1500 Models 8060H/8060H-B/ 8160H/8160H-B

Power, Speed, Intelligence and Convenience

Direct Screw Drive

- Integrated Wi-Fi with OHD Anywhere® (8160H/8160H-B)
- Integrated battery backup (8060H-B/8160H-B)
- 140V DC motor
- Opening speed up to 12 inches/second
- CodeDodger® Access Security System
- Motion detection activates lights



Battery Backup capable
Available with integrated
OHD ANYWHERE

Destiny® 1200 Models 8130H/8130H-B

Quiet Yet Powerful with the Ultimate in convenience

Belt or Chain Drive

- Integrated Wi-Fi with OHD Anywhere®
- Integrated battery backup (8130H-B)
- 140V DC motor
- Opening speed up to 9 inches/second
- CodeDodger® Access Security System
- Motion detection activates lights



Battery Backup capable
Available with integrated
OHD ANYWHERE

Odyssey® 1000 Model 7030/7030H-B/7130H/ 7130H-B

Quiet Yet Powerful Performance

Belt or Chain Drive

- Integrated Wi-Fi with OHD Anywhere® (7130H/7130H-B)
- Integrated battery backup (7030H-B/7130H-B)
- 140V DC motor
- Opening speed up to 7.5 inches/second
- CodeDodger® Access Security System

Openers

Designed for Performance



Legacy® 920

Models 7120H/7120H-B/7120HL/7120HL-B

Flexible Platform with Power and Reliability

Belt or Chain Drive

- Integrated Wi-Fi with OHD Anywhere®
- Integrated battery backup (7120H-B/7120HL-B)
- Integrated LED lighting (7120HL/7120HL-B)
- 24V DC motor
- Opening speed up to 7.0 in/second†
- DC motor for quiet operation and lighter handling
- C-channel rail for strength and aesthetics
- CodeDodger® Access Security System



Battery Backup capable
Available with integrated
OHD **ANYWHERE**®



Legacy® 850

Models 2029/2029B/2129/2129B

Power, Value and Reliability

Belt or Chain Drive

- Integrated Wi-Fi with OHD Anywhere® (2129/2129B)
- 24V DC motor
- Opening speed up to 7.0 in/second
- DC motor for quiet operation and lighter handling
- C-channel rail for strength and aesthetics
- CodeDodger® Access Security System



Can be ordered with (2029B, 2129B) or without (2029, 2129) optional integrated battery backup at time of purchase only.

OHD **ANYWHERE**®



Legacy® 650

Models 1029/1029B/1129/1129B

Value and Reliability

Belt or Chain Drive

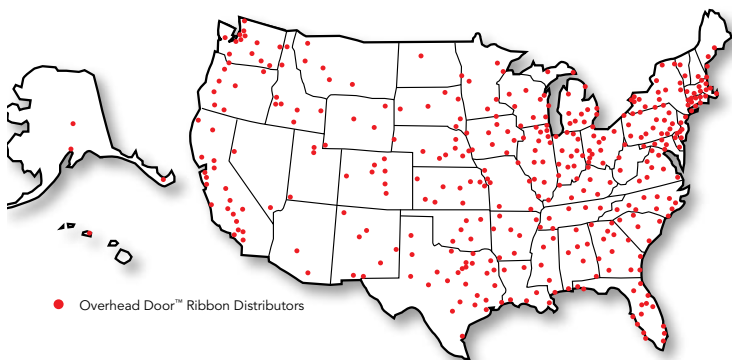
- 24V DC motor
- Opening speed up to 6.5 in/second
- DC motor for quiet operation and lighter handling
- C-channel rail for strength and aesthetics
- CodeDodger® Access Security System
- Integrated Wi-Fi with OHD Anywhere® (1129/1129B)



Can be ordered with (1029B, 1129B) or without (1029, 1129) optional integrated battery backup at time of purchase only.

OHD **ANYWHERE**®

Nationwide Distributor Network



**Transform Your Home
with the DoorView®
Visualization Tool.**



Go to **overheaddoor.com** to try our online interactive software tool that lets you visualize what your home would look like with an Overhead Door™ garage door. Contact your local Overhead Door™ Distributor for more information and to receive a quote.



The Genuine. The Original.



2501 S. State Hwy. 121 Bus., Suite 200, Lewisville, TX 75067
1-800-929-DOOR • sales@overheaddoor.com
overheaddoor.com

©2025 Overhead Door Corporation. Overhead Door is a trademark and the Red Ribbon logo is a registered trademarks of Overhead Door Corporation. All other trademarks are the property of their rightful owners. Consistent with our policy of continuing product improvements, we reserve the right to change product specification without notice or obligations. R900-231 01/25

SOLD AND DISTRIBUTED BY:

Overhead Door Company of Southern California™

12215 Kirkham Road Suite 200, Poway, CA 92064
(858) 264-3650